



Trail Guide

Cecil Recreational Trail

Activities allowed on property

- Wildlife Viewing
- Hiking
- Bicycle Riding
- Equestrian Activities

Trails

- Main - 1 Blue Stripe
- Spur - 2 Blue Stripes
- Trails - Marked with wood post and arrows for directions

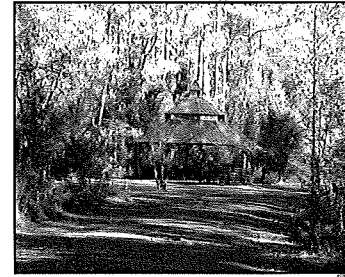
Park Rules

Park Hours are sunrise to sunset

- No organized group activities
- Management reserves the right to close park facilities to the public
- Possession and consumption of alcoholic beverages prohibited
- Animals must be on leash
- Dispose of animal waste properly
- No dumping or littering
- Glass containers prohibited
- No soliciting or vending without appropriate licenses and permits
- Non-licensed motorized vehicles prohibited
- Do not disturb wildlife or vegetation
- Swimming is prohibited
- Motorized vehicles to be driven on designated roadways and parking areas only
- JSO and other law enforcement officials have the authority to enforce park rules and issue trespass warnings which may prohibit violators from this park or all parks for one year
- A full listing of all park rules are posted on www.jaxparks.com

Pope Duval Park
I-10

Cecil Field
Conservation
Corridor



Taye Brown
Regional
Park

Florida State
College
at Jacksonville
Campus

Softball/Aquatic
Center

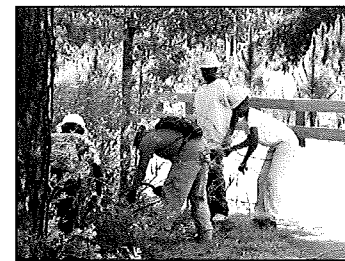
Golf
Course

Normandy Blvd.

Equestrian
Center

Taylor
Creek
Preserve

Jennings State
Forest
Yellow Water
Tract



LEGEND

- Paved/Main Trail
- Unrefined Trail
- Spur Trails
- P** Parking
- ⊗ Crossing Point for Normandy Blvd.
- ↑ Pavilion
- ▨ Hunt Area